

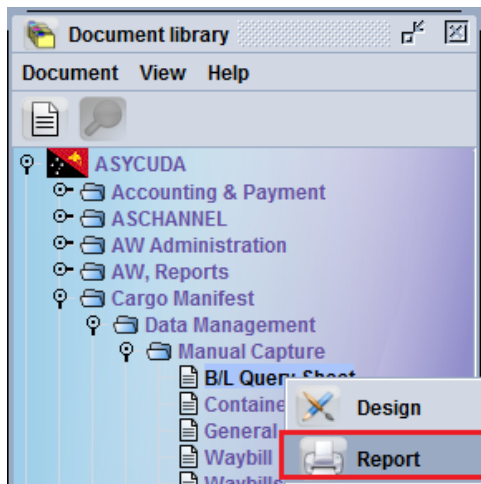
Papua New Guinea Customs Service

How to Search for a Specific Bill

The following functional note provide AW authorized users with the information necessary for searching for a specific Bill using the ASYCUDA World (AW) system.

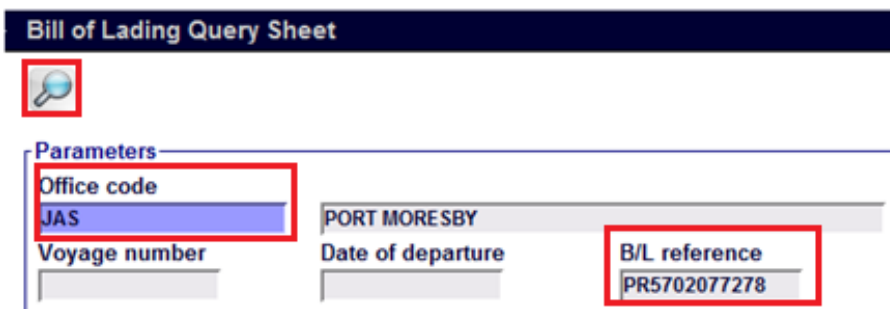
This is done as follows:


1. Go to ASYCUDA → Cargo Manifest → Data Management → Manual Capture → B/L Query Sheet, Right click and choose **Report**



2. Enter the required Bill Details
 - Office code
 - B/L reference → The 'B/L reference' (not case sensitive).

3. Click on the 'Search B/L'  icon



Bill of Lading Query Sheet		
		
Parameters		
Office code	PORT MORESBY	
JAS	Date of departure	B/L reference
Voyage number		PR5702077278

4. Scroll the 'B/L details' view screen to view more details of the Bill, including if it belongs to a manifest registered or not, if there are containers or not, if it has been written-off by SAD (SAD assessment number) or Manually discharge or transshipped



Bill of Lading Query Sheet



Parameters

Office code	PORT MORESBY	
JAS		
Voyage number	Date of departure	B/L reference
		PR5702077278

B/L details

Manifest Reg. No: null

Voyage: VA039

Date of departure: 24/09/2017

Date of arrival: 24/09/2017

Master BL: 79530316683

Carrier: PNG AIR LTD

Place of Loading: Brisbane

Place of Unloading: Port Moresby

Consignee: 500379795
PACIFIC PROJECT LOGISTICS LTD
BOROKO
P.O.BOX 6861
NATIONAL CAPITAL DISTRICT,PNG
graham@pacificprolog.com

Manifested packages: 3

Package Type: BX

Manifested weight: 99

Degroupage status: 500005451

Vessel: VA

Marks: 3 X 99

Description of goods: FLANGES

Location: CLD4JAS09 - Express Freight Management (PNG)

Write-off:

Containers: